

Handbrake and Linkage (Vac./Hyd.)

# HANDBRAKE AND LINKAGE

Vacuum/hydraulic Models

## HANDBRAKE

### Adjustment

The handbrake is correctly adjusted when it is possible to apply 6-8 notches of the handbrake ratchet between the fully off and the fully applied positions.

To adjust, chock the wheels and fully release the handbrake.

Clean the compensator and cable fork ends prior to slackening off fork end locknuts.

Disconnect fork ends by removing split pins and clevis pins.

Align compensator shackle and actuating lever to the dimensions shown in Fig. 1.

Applying a light pull on the main cable to take up slack, adjust cable fork until clevis pin fits easily through the fork end and actuator lever. Recheck dimension.

Adjust the fork ends of both right and left hand cables (whilst applying a light pull on each) until clevis pin fits easily.

Recheck dimensions.

Fit new split pins to the clevis pin, tighten locknuts and apply grease to pins and threads.

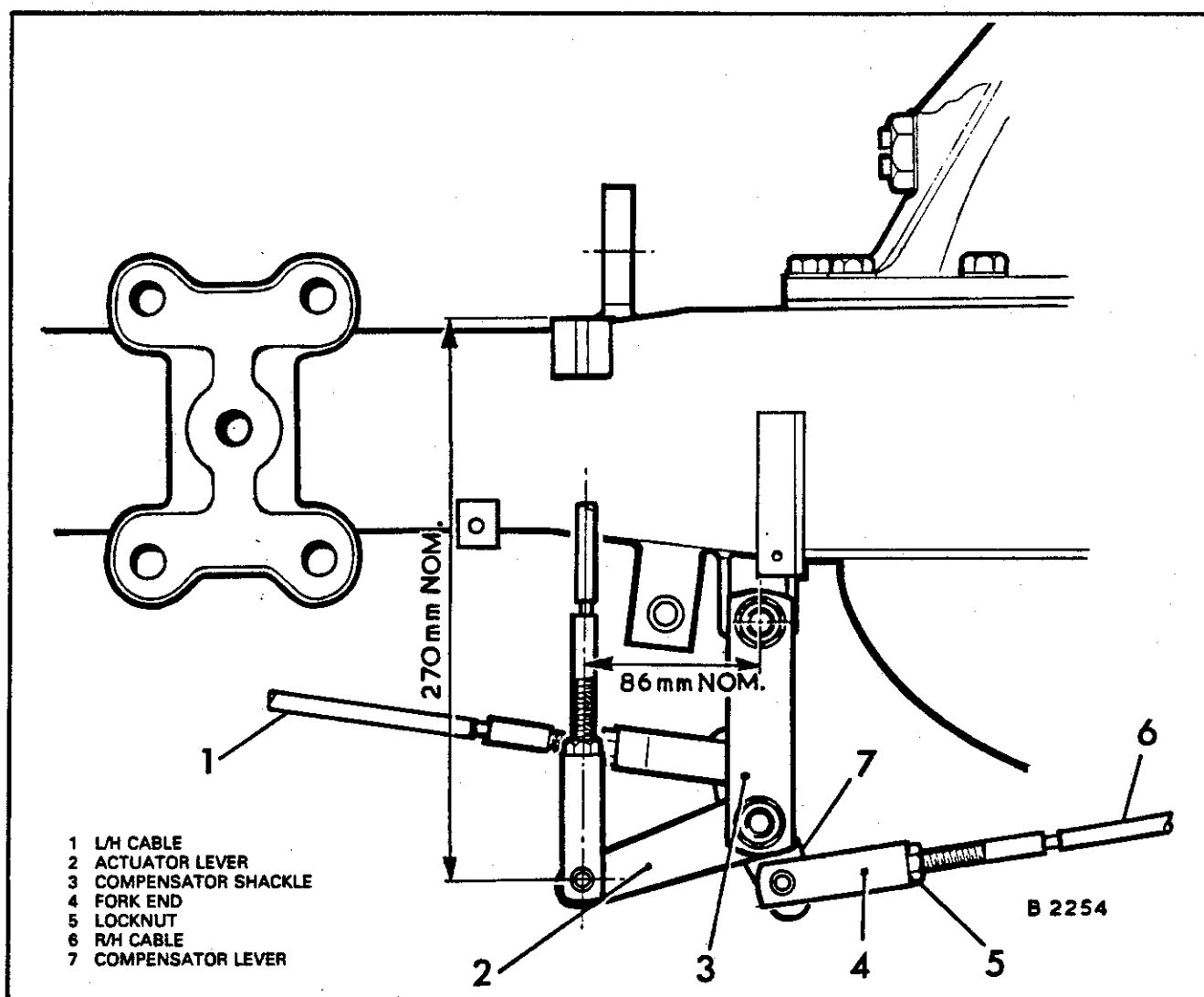


Fig. 1 Handbrake Adjustment

### Handbrake and Linkage (Vac./Hyd.)

#### HANDBRAKE WARNING

The handbrake warning light is actuated by a switch mounted to the cable abutment bracket beneath the cab floor.

#### Adjustment

With the handbrake lever in the fully off position, adjust the switch so the the switch retaining nut is in contact with the relay lever.

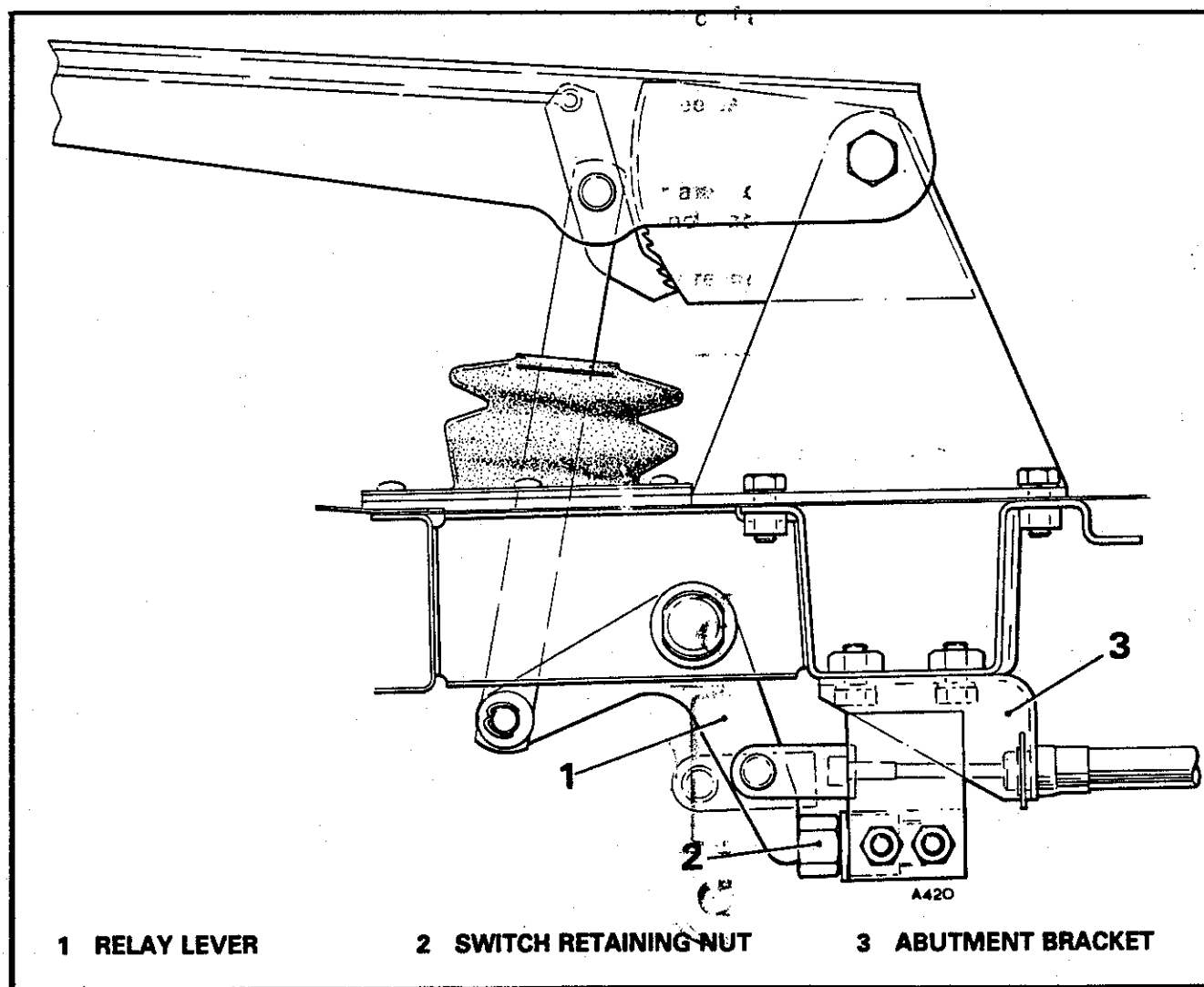


Fig. 2 Handbrake Warning Light Switch